



THE SOURCE FOR CLASSIC
LAND ROVER PARTS
www.roversnorth.com

Part Nr. PLB064

Fits: Defender 90, 110, 130

Note: This bumper is not
compatible with 110 and 130
High Capacity Pickup (HCPU)
Models.

Suggested Tools:

- Safety Glasses
- Waxoyl 120-4 or similar
corrosion preventative
and lubricant
- Various wrenches
and sockets



Safety Glasses



Waxoyl 120-4
RNW5004



Various sized
Wrenches



Various sized Sockets
and Socket Wrench

Fitting Instructions for Defender Rear Step & Tow Bumper

READ ALL INSTRUCTIONS COMPLETELY BEFORE BEGINNING!



Description

Tubular construction that bolts directly to Defender chassis rear crossmember. Includes 90 and 110 mounting brackets, rubber tread plate and hardware with instructions. Features built-in receiver for standard 2 inch Class III tow hitch. Superior corrosion resistant finish features hot dipped galvanizing with a durable Satin black powder coat top finish. Appears normal Land Rover Satin black but when scratched, or damaged from use will not blister or rust, offering years of corrosion free service. Made in the UK for Rovers North.

This kit Includes Rear Step & Tow Bumper w/Class III Receiver, rear rubber treadplate and all mounting hardware.

Crossbar Identifier:



Defender NAS 90



90 Models w/Side Tank



All Defender 110 Models



Optional Spacer Bar



Bottom Securing Bar

Fitting Instructions for Defender Rear Step & Tow Bumper

Directions

Mounting the Rear Step & Tow Bumper

Step 1. Remove all accessories bolted to the outside face of rear cross-member. Clean the bottom surface of your rear crossmember, removing any debris from the threaded holes.

Step 2. Apply Waxoyl Professional 120-4 to receiving holes in rear crossmember and coat bumper studs (Fig. 1).

Step 3. With assistance, offer the bumper to vehicle. Secure by loosely fitting the two 10 x 30mm bolts to the bumper studs.



[Fig. 1]

Step 4. Locate the threaded holes on the bottom of the rear crossmember that align with the holes in the rear bumper. Next, place the bottom securing bar under the rear bumper and bolt to the bottom of the rear crossmember, sandwiching the rear bumper and optional spacer between the securing bar and the rear crossmember (Fig. 2).



[Fig. 2]

Step 5. Fit the two 10 x 80mm bolts to the outer ends of bumper (Fig. 3).



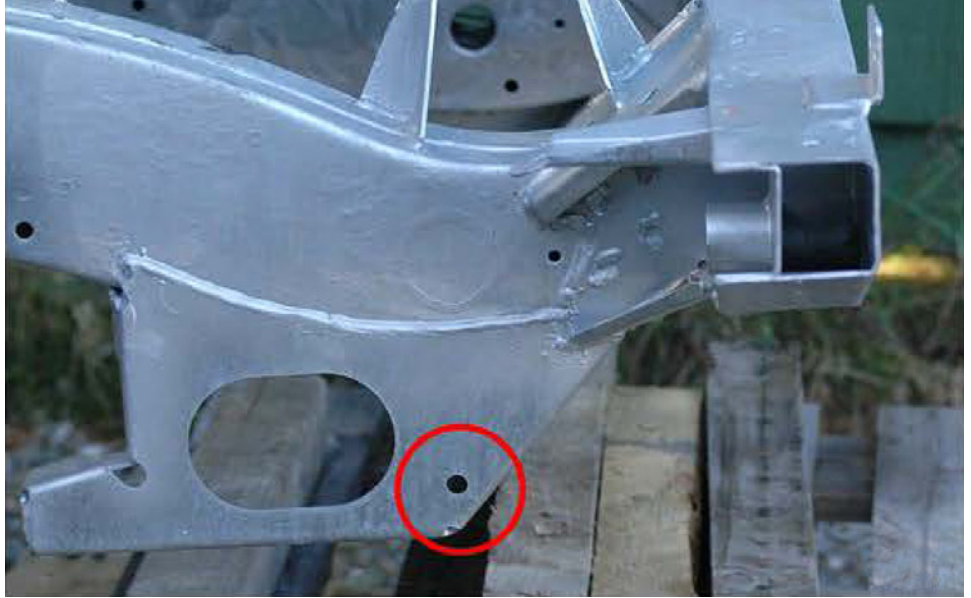
[Fig. 3]

Fitting Instructions for Defender Rear Step & Tow Bumper

Step 6. Tighten all hardware before installing crossbars.

Step 7. With your new rear bumper bolted to the rear crossmember, select the appropriate crossbar for your Defender. The rear of the crossbar fits to the brackets on either side of the Class III receiver, while the front fits to the holes shown (90s Fig. 4) and (110 Fig. 5).

See (Fig. 4) for 90 with rear fuel tank, bolt crossbar here.



[Fig. 4]

See (Fig. 5) All 110 models bolt crossbar here.

See (Fig. 6) for proper installation of crossbar to Class III receiver brackets.



[Fig. 5]

Includes Rubber Tread Plates with Black Anodized Stainless Steel screws RNQ165 Black Rubber Mat.



[Fig. 6]