



THE SOURCE FOR CLASSIC
LAND ROVER PARTS

www.roversnorth.com

Fitting Instructions for Discovery II Intake Tube Kit for Air Cleaner

Part Nr. PLH269H

Fits: Discovery II

READ ALL INSTRUCTIONS COMPLETELY BEFORE BEGINNING!

Introduction

If your Discovery II is like most, your intake tube probably looks like a rat's nest. The genuine tube was made of a fabric wrapped around wire and after time this fabric deteriorates. This not only lets hot air into your air box, but can allow water to get into the air box if fording a waterway. The only solution up to now, was to buy the entire air box assembly, but you would still be left with an inferior fabric tube.

Once you have bought one of our new and improved silicone intake tube kits, made from high temp silicone, you will need to install it.



Tools Needed

For the install, you could probably do it with your teeth and a rock, but we suggest the following tools:

- Flat head screwdriver
- 10 mm open end wrench
- Brake cleaner or other mild solvent (rubbing alcohol)
- Dirty shop rag
- And a pocket knife, just because you should always have one.



Flat Head
Screwdriver



10mm
Open End
Wrench



Brake Cleaner
or other mild
solvent



Pocket Knife



Dirty
shop rag



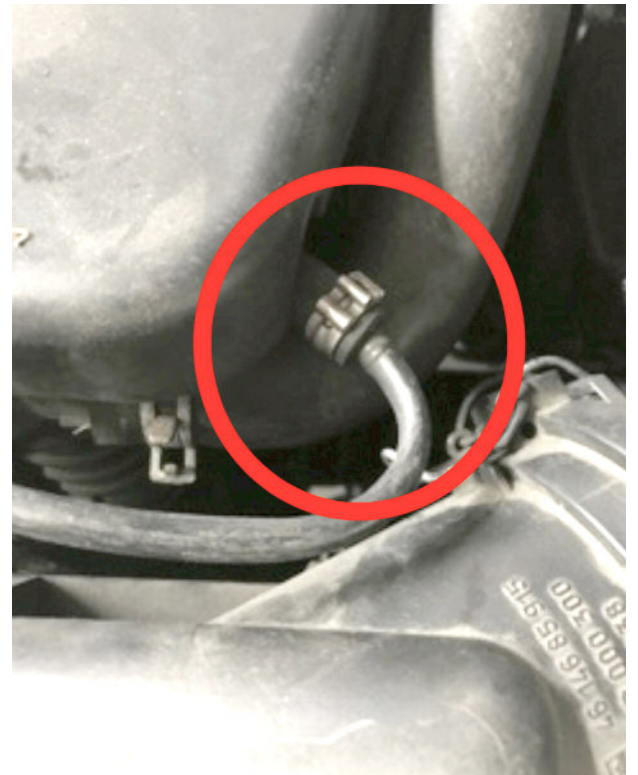
Step 1. Open your hood and locate the air box assembly.



Step 2. Using the 10mm wrench undo the two plastic nuts on each side at fender junction.

CAUTION

Step 3. Be very cautious not to molest the small line going into the radiator at the top position shown here, if it is bent it can break the small plastic nipple on your radiator, that's no Bueno.





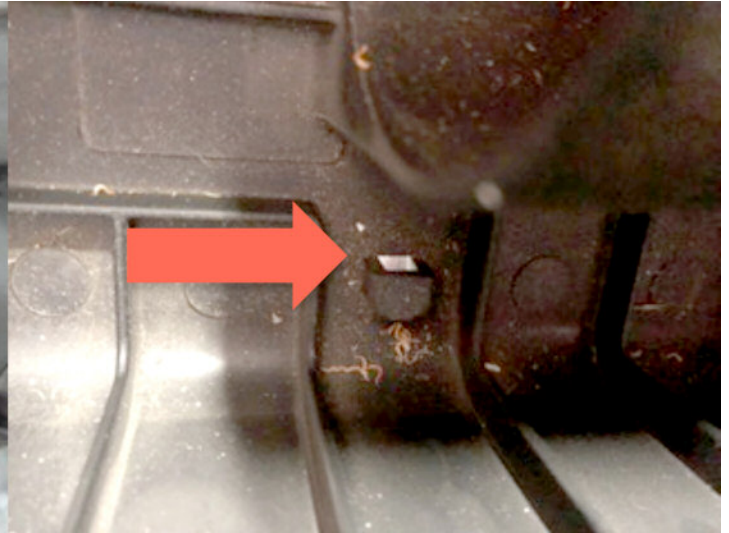
Step 4. Undo the three clips on the air box lid as well as the two clips joining the MAF tube to the air box lid and remove the lid.



Step 5. Once the lid is removed, pull up on the power steering reservoir and push out of the way.



Step 6. Now pull up on lower airbox assembly to remove entire unit.

Fitting Instructions for Discovery II Intake Tube Kit for Air Cleaner

Step 7. Remove the Genuine Land Rover rat's nest at air box and fender elbow sides. If you are planning on doing water crossings it is advisable to use some silicone based sealant to plug up this hole on the lower airbox lid. Two above photos show the outside and inside position.

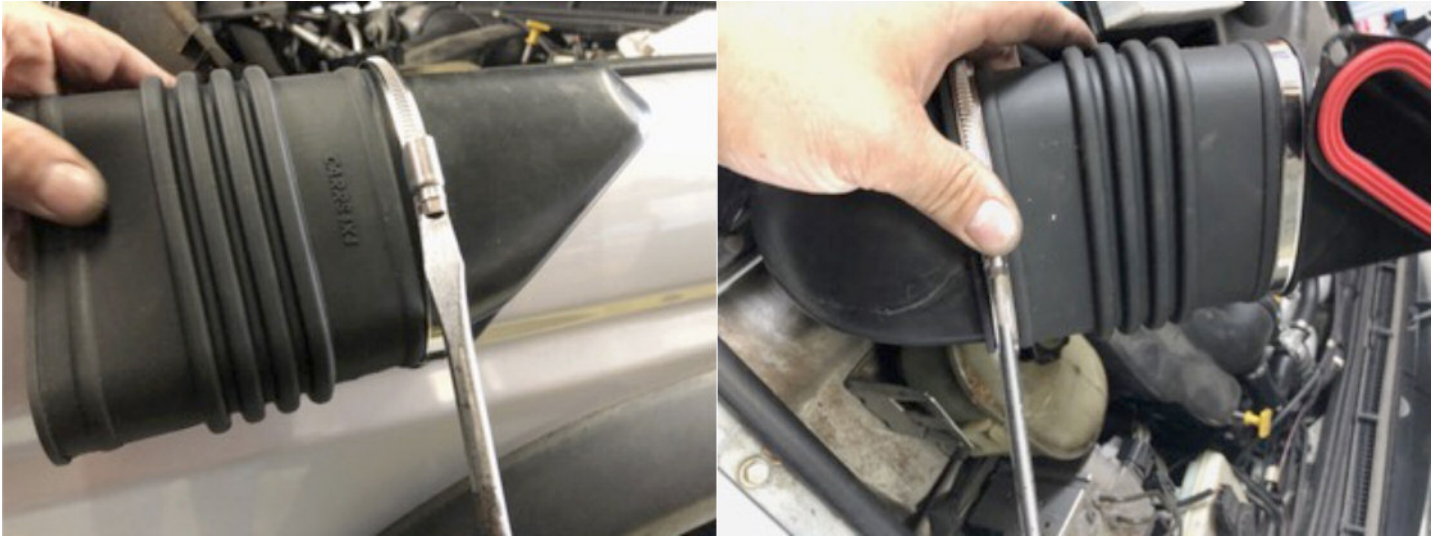


Step 8. Take the fender elbow and remove the foam seal with adhesive back. Clean mating surface with solvent.



Step 9. Apply one of the two silicone gaskets on the inner rim.
**Please note: second gasket is used when installing a snorkel at the outer fender position.*

Gasket shown applied.



Step 10. Now grab the new intake tube and bend the circle worm drive clamps into an oval shape and slide onto the end positions which have recesses for the clamps.



***PLEASE NOTE! IF YOU PLAN ON CROSSING WATERWAYS WE SUGGEST ADDING A SMALL BEAD OF SILICONE SEALANT AT BOTH SILICONE TUBE ENDS TO PLASTIC JUNCTIONS BEFORE TIGHTENING CLAMPS.**

Fitting Instructions for Discovery II Intake Tube Kit for Air Cleaner



Step 11. Once both worm drive clamps are tight, refit lower air box, be careful of the "no Bueno" radiator hose that can ruin your day.



Step 12.
Congratulations,
you are all done!