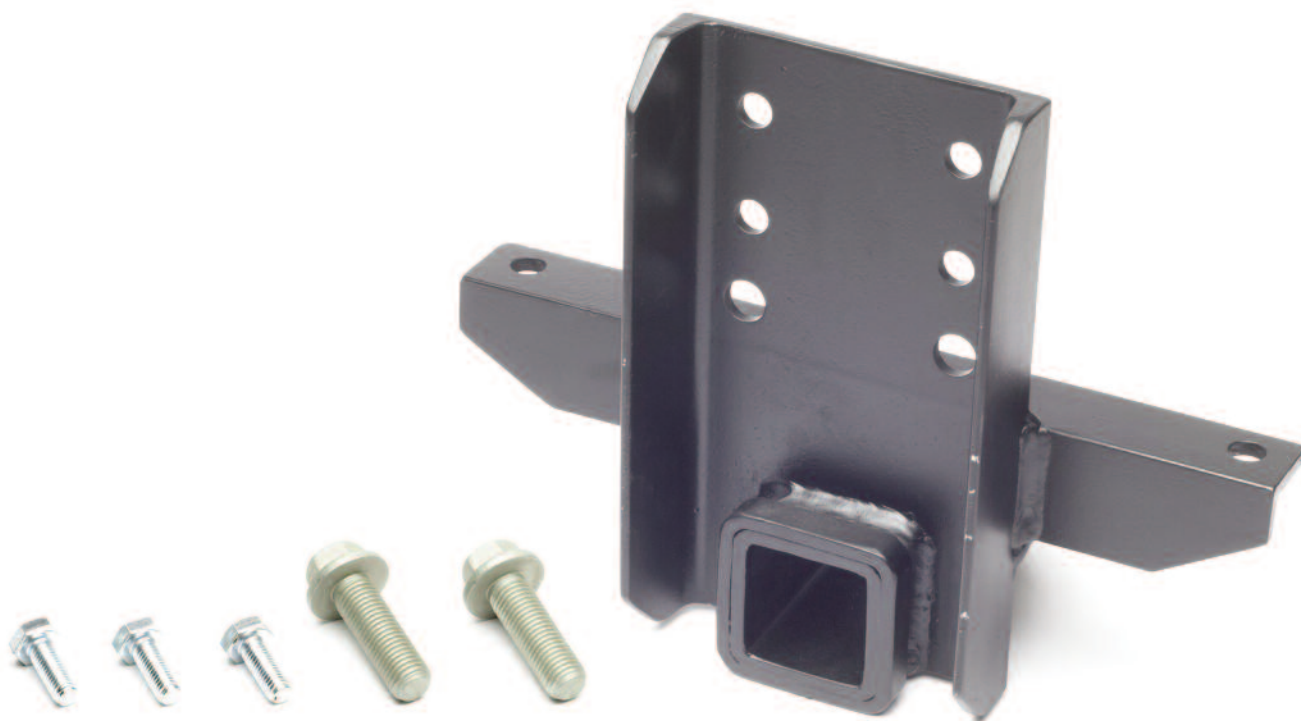




*The Source for Classic Land Rover Parts*

## Fitting Instructions for Class III Receiver Hitch for Defender 1999-2015 Kit - RNA091

**Read All Instructions Completely Before Beginning!**



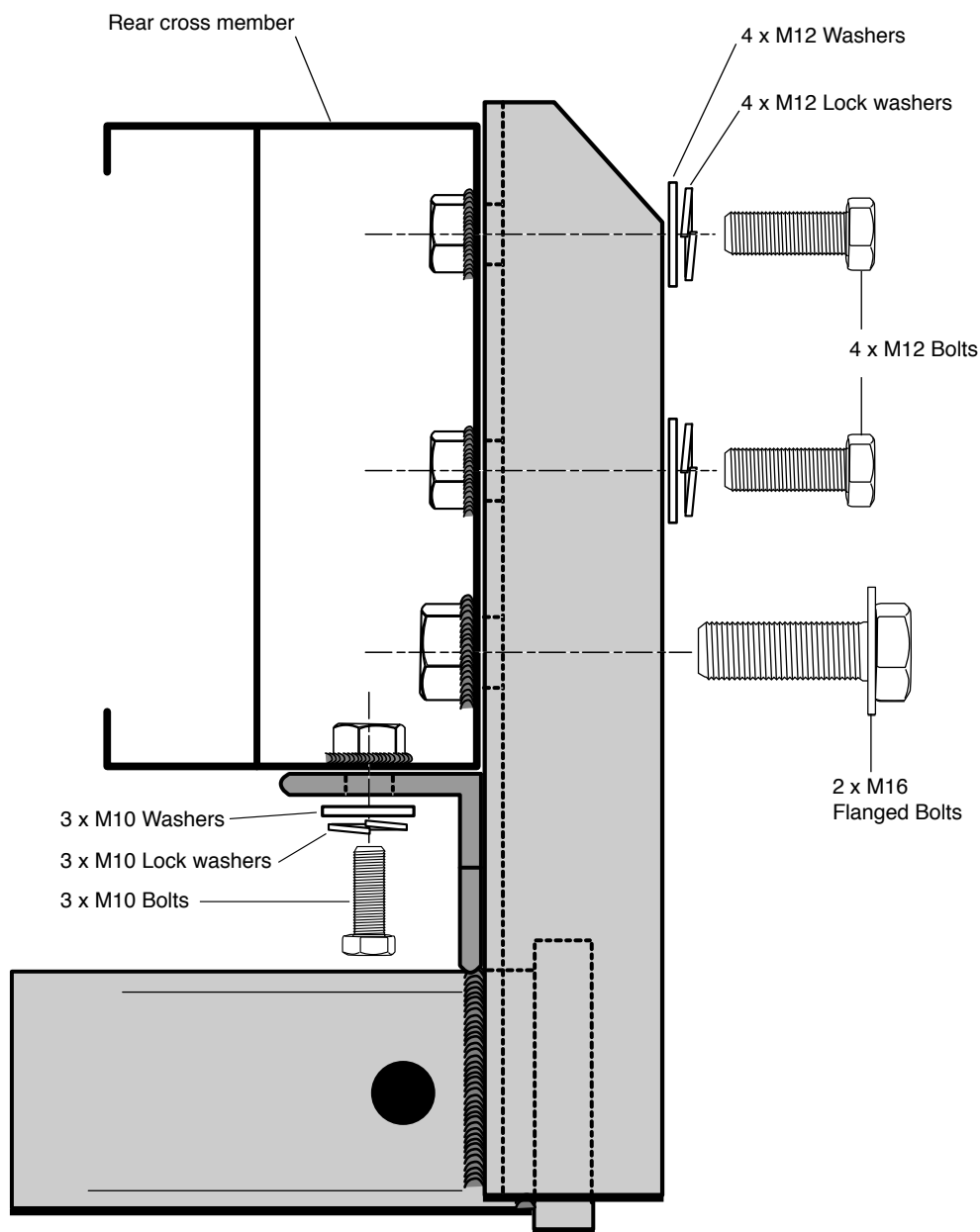
QTY	PART	DESCRIPTION
3	42078	M10 x 1.5 x 25
3	42465	M10 washer
3	42455	M10 lock washer
4	42105	M12 x 1.75 x 40 bolts
4	42466	M12 washer
4	42456	M12 lock washer
2	FB116106	M16 x 2.0 x 45 bolts (flanged, thread all the way)



*The Source for Classic Land Rover Parts*

## Fitting Instructions for Class III Receiver Hitch for Defender 1999-2015 Kit - RNA091

**Read All Instructions Completely Before Beginning!**



**Cross Section**