



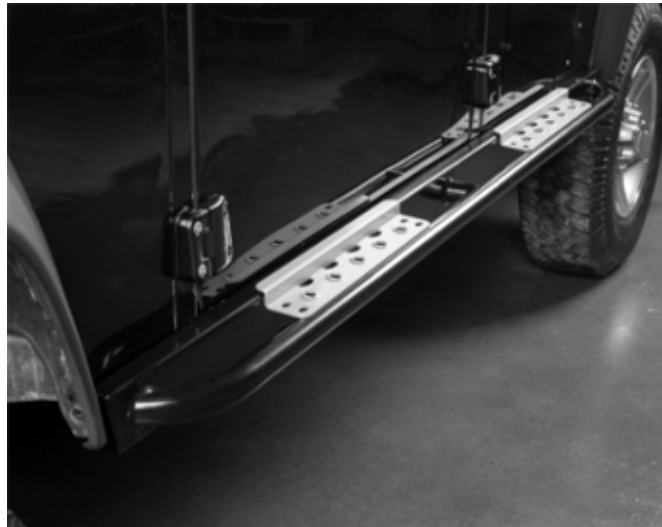
The Source for Classic Land Rover Parts

RNA1081**Rock Slider with Tree Bar for Defender 110****Fits:**

110 Station Wagon
 110 Crew Cab
 110 Regular Pickup*
 110 Regular Hard Top*
 110 Regular Soft Top*

*Requires middle floor
 crossmember (PLQ687)

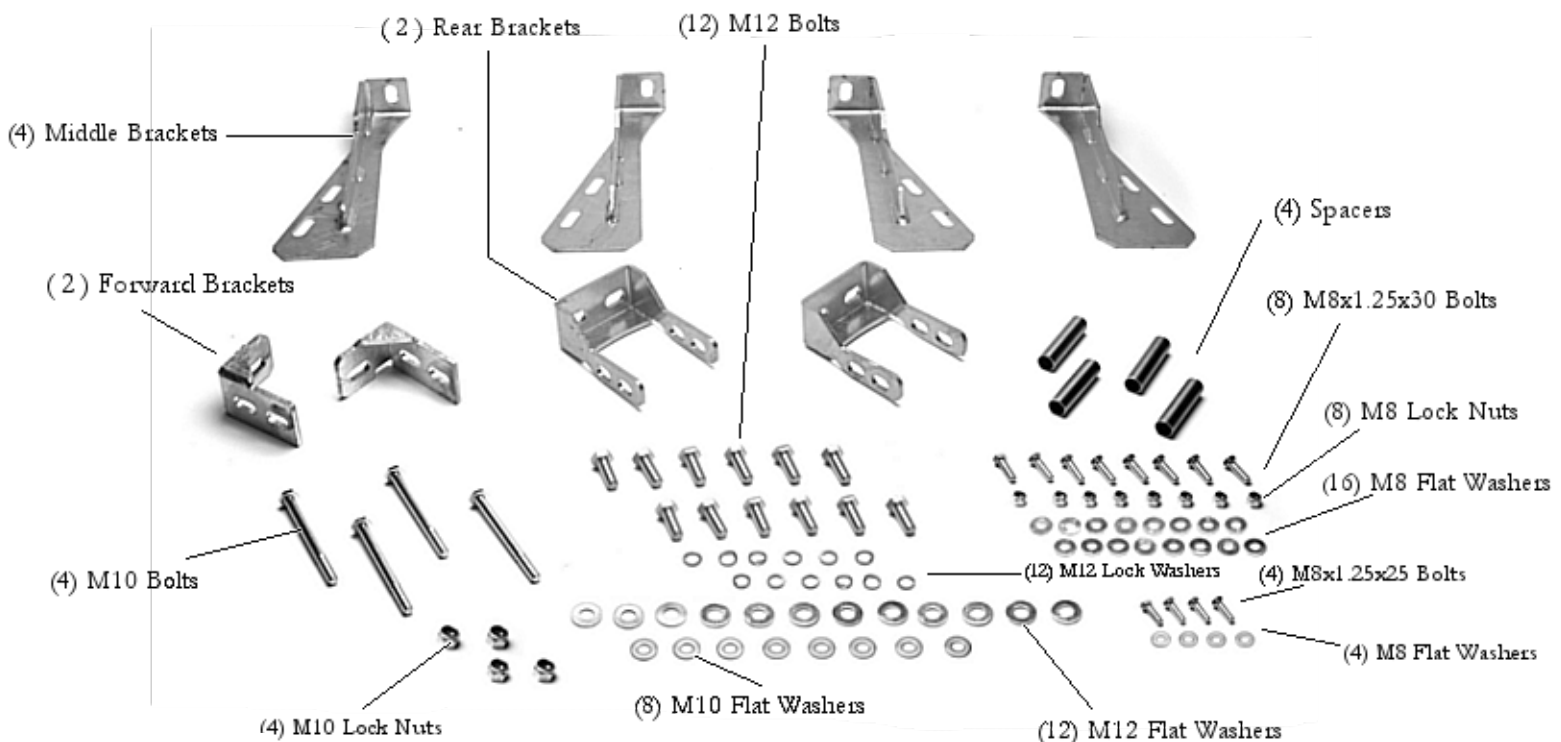
NOT FOR 110 High Capacity



Shown with modular tread plates (RNA1080SS)

Tools:

--10mm wrench/socket
 --13mm wrench/socket
 --19mm wrench/socket
 --Pliers





The Source for Classic Land Rover Parts

Pre-Installation

1. Remove sill and brackets (see **Figure 1**).
2. Remove plastic rivets from eyebrow by pushing central mandrel through with a punch.
3. Remove nut from bulkhead outrigger bolt.



Figure 1: Sills removed, chassis mounting points exposed.



The Source for Classic Land Rover Parts

Preparation

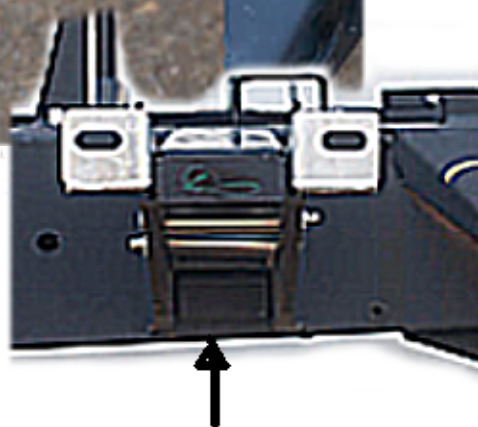
1. Install forward bracket loosely to rock slider, with corner gusset on bottom using two 12mm bolts and the appropriate lock & flat washers. Do not tighten hardware at this time (see **Figure 2**).
2. Install middle brackets to chassis using two 10mm bolts, four flat washers, two spacers, and two lock nuts. Hand tighten only to allow for adjustment (see **Figure 3**).



Figure 2: Forward bracket, properly mounted on rock slider.



Figure 3: Middle brackets, properly mounted.



Install the provided spacers between the two middle brackets.



The Source for Classic Land Rover Parts

3. Install rear bracket to middle floor crossmember using four 8mm bolts, eight flat washers, and four lock nuts. Do not tighten hardware at this time (see **Figure 4**). NOTE: The middle floor crossmember will require installation on 110 Regular models. You may need to spread rear bracket to ease fitment over body mount flange.

TIP! It may be necessary to bend body mount flange in order for middle floor crossmember to accept the rear bracket (see **Figure 5**).

4. Assemble four more 12mm bolts with the appropriate lock & flat washers.

5. Find someone to assist you with mounting your rock sliders.



Figure 4: Rear bracket, fitted to middle floor crossmember.

Need help? See **Figure 6** for a complete diagram of the hardware and mounting points mentioned in this set of instructions.

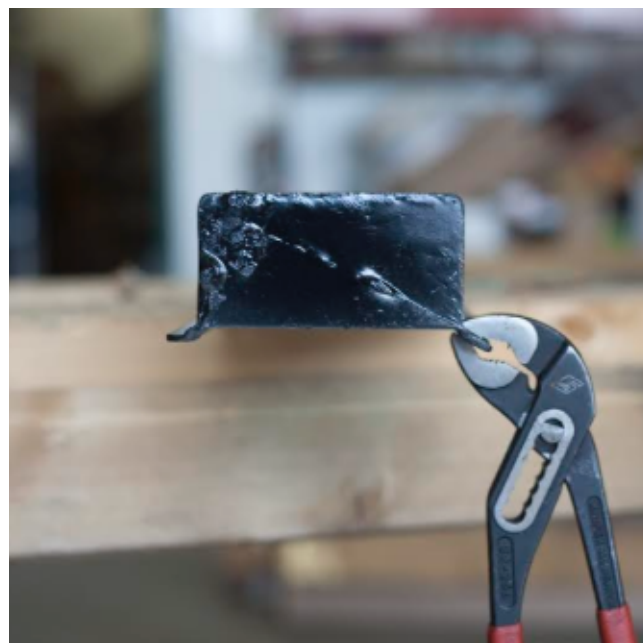
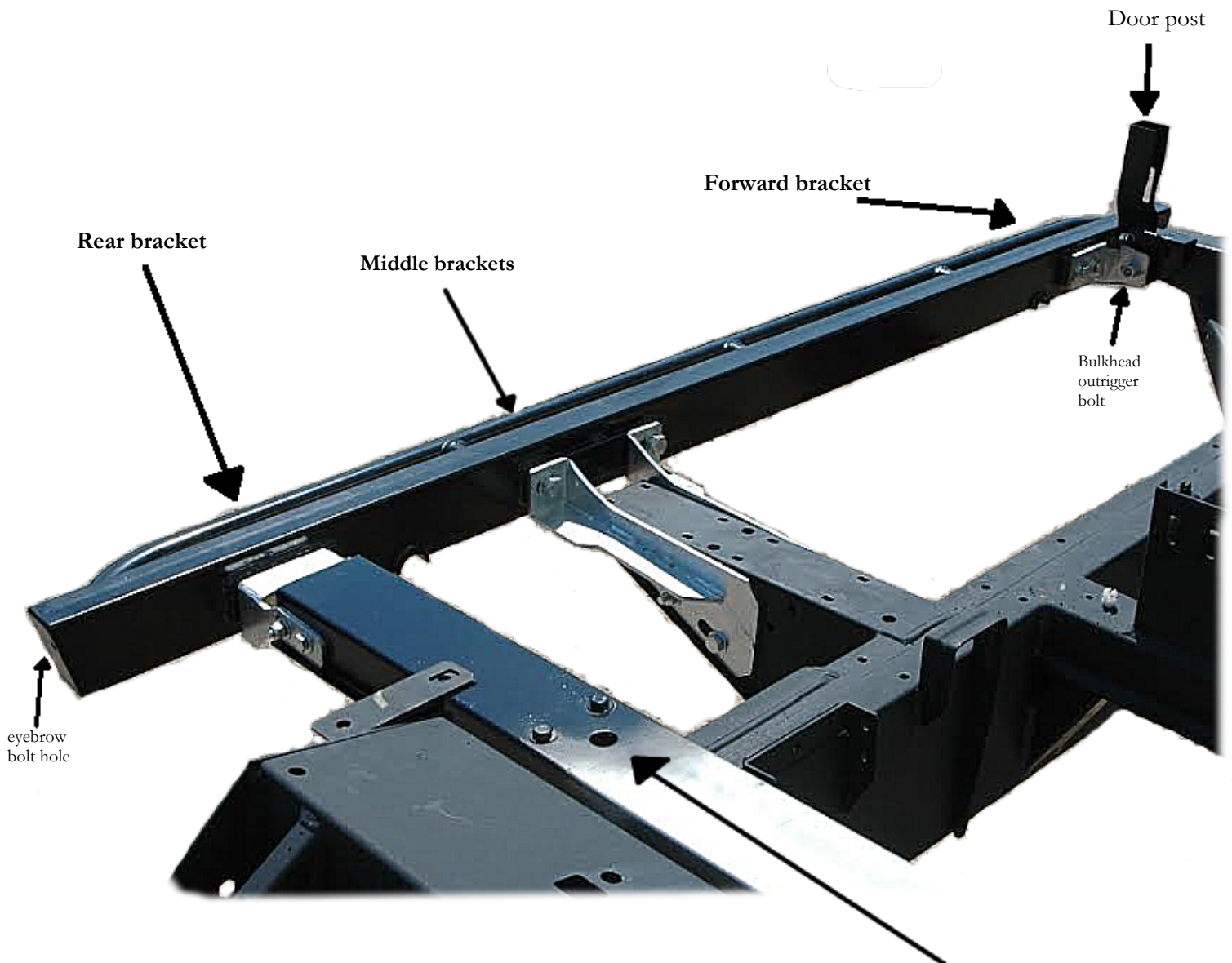


Figure 5: Without alteration, reception of the rear bracket will be difficult. Bend flange on the middle floor crossmember down with a pair of pliers to allow for bracket fitment.



The Source for Classic Land Rover Parts

Figure 6: Brackets and hardware properly installed on chassis and middle floor crossmember.



Middle floor crossmember (PLQ687). Standard on 110 Station Wagon and Crew Cab models. Requires a simple, bolt-on fitment to 110 Regular models.



The Source for Classic Land Rover Parts

Installation

1. With a capable assistant, carefully lift the rock slider and guide the forward bracket onto the bulkhead outrigger bolt, tightening the nut by hand.
2. Place one bolt through the rear bracket and tighten by hand to add security while installing the rest of the hardware.
3. Fit the three remaining bolts, tightening only by hand.
4. At this point, inspect the rock slider and determine the adjustments that will be needed to allow for a correct fit.
5. With your assistant aligning the rock slider against your vehicle, begin to tighten all hardware, starting first with the hardware on the rock slider, followed by the bracket hardware.
6. When the rock slider is perfectly aligned and the hardware is tightened, install and tighten the two 8mm eyebrow bolts.(see **Figure 7** for finished product).
- 7.Reinstall mudflaps (if equipped), trimming corners to accompany your rocksliders (see **Figure 8**).



Figure 7: An example of the rock sliders properly installed, paired with optional black modular tread plates (RNA1080SS).



Figure 8: To reinstall mudflaps a small cutout, such as the one drawn above, will be necessary.



The Source for Classic Land Rover Parts

Tread Plate Installation Guide



Shown here with full length silver tread plates (RNA1081LS).

Supported Tread Plates

RNA1080LS	Full Length 90 Silver
RNA1080LB	Full Length 90 Black
RNA1081LS	Full Length 110 Silver
RNA1081LB	Full Length 110 Black
RNA1080SS	Modular Pair Silver
RNA1080SB	Modular Pair Black

1. Position tread plate on rock slider and mark rivet hole for reference.
2. Drill 3/16 holes through marked area.
3. Using the supplied hardware, rivet your new tread plates to the rock slider.

TIP! For maximum corrosion protection, paint your drilled holes prior to installing rivets.



Shown here with silver modular tread plates (RNA1080SS).

IMPORTANT: Tread plate rivets to the side of the rock slider's boxed section, not to the tubular tree bar, as shown above.