



THE SPECIALISTS IN LAND ROVERS • USA

Range Rover Classic Sill Protectors

Hardware List:

Quantity.....Hardware

Bolts

16.....8mm x 1.25 x 20
 8.....8mm x 1.25 x 60
 8.....12mm x 1.60 x 30
 4.....10mm x 1.75 x 20

Washers

32.....8mm
 8.....12mm

Nuts

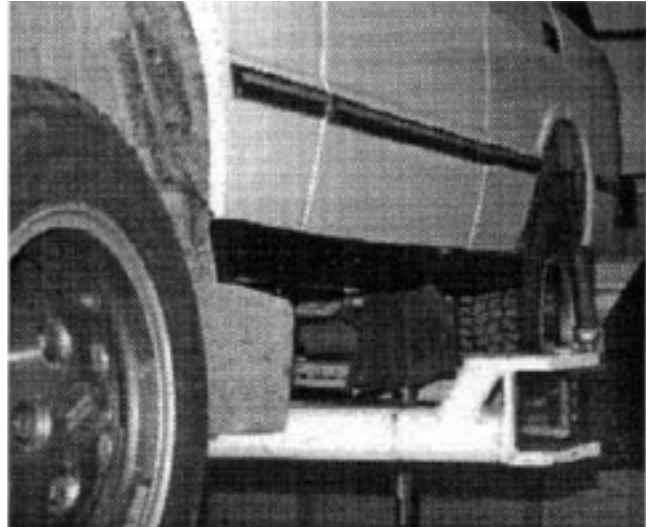
4.....12mm
 8.....8mm
 16.....8mm rivnuts

Misc

2.....Sill protectors
 2.....Front sill arms (angled)
 2.....Rear sill arms (straight)
 2.....Front sill mount plates
 2.....Rear sill mount plates

Tools required:

- 13mm wrench & socket
- 17mm socket
- 19mm wrench
- 3/8" Drive ratchet
- 7/16" drill bit
- Drill



Finished product

Installation

1. Remove plastic rivets from finisher sill (see fig 1)

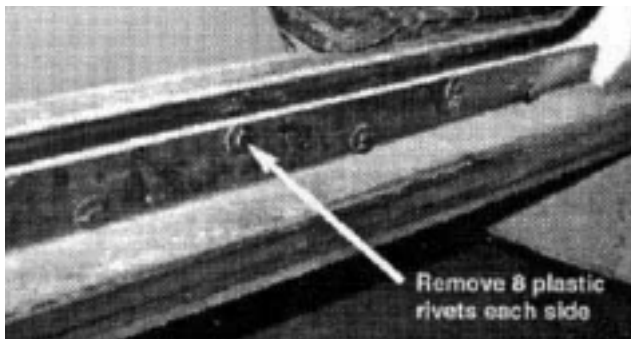


Fig. 1

2. Remove bolt and nut (10mm) form front of finisher sill (fig. 2).
3. Remove finisher sill.
4. Reinstall bolt and nut with bolt head facing down (fig 2).



Fig. 2

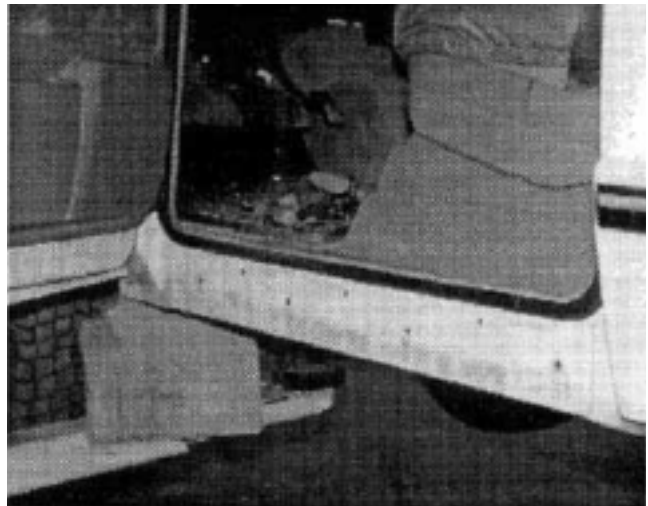


Fig. 3

5. enlarge holes where plastic rivets were previously installed to 7/16" (see fig 3).
6. Install riv nuts in enlarged 7/16" holes (8 per side).



T H E S P E C I A L I S T S I N L A N D R O V E R S • U S A

Range Rover Classic Sill Protectors

Installation



Fig. 4

7. Remove nut from front and rear outrigger (see fig. 4).
8. Install front and rear hanger brackets on outrigger (fig 5).
9. Install front and rear hanger bracket nuts hand tight (fig 5a).

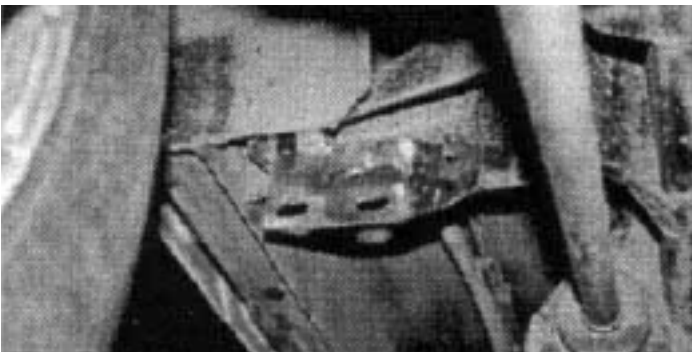


Fig. 5 Rear hanger bracket shown

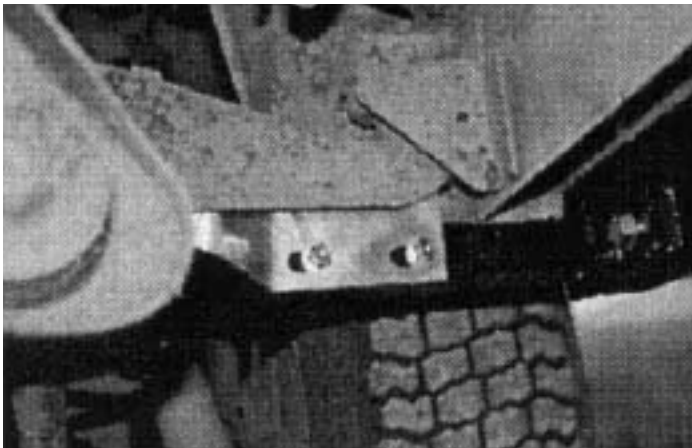


Fig. 5a Rear hanger bracket shown with bolts hand tight



Fig. 6 Detail mark hole location as shown

10. Mark hole locations (fig 6).
11. Remove front and rear hanger brackets.
12. Drill holes to 7/16".
13. reinstall brackets.
14. Install 10mm bolt and nut.

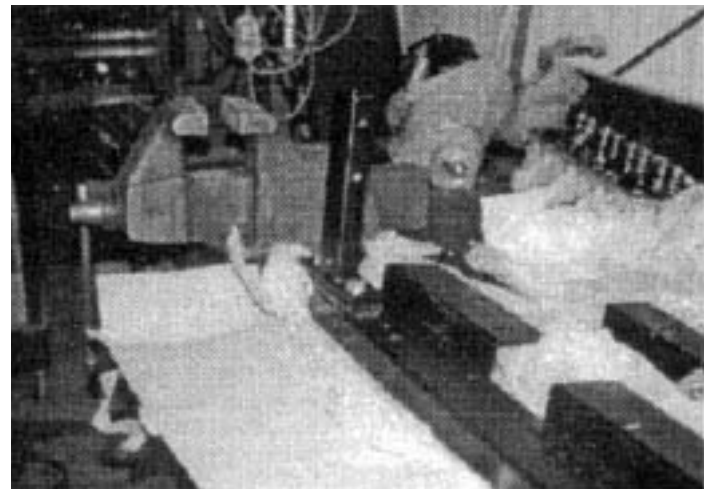


Fig. 7

15. Loosely install arms on sill front arm curve up (rear arm straight) using 13mm bolt (see fig 7).



T H E S P E C I A L I S T S I N L A N D R O V E R S • U S A

Range Rover Classic Sill Protectors

Installation



Fig. 8 Rear arm loosely attached to hanger

16. Loosely attach sill to the hangers using 4 bolts, 8mm washers, and nuts (see fig 8 & 8a).

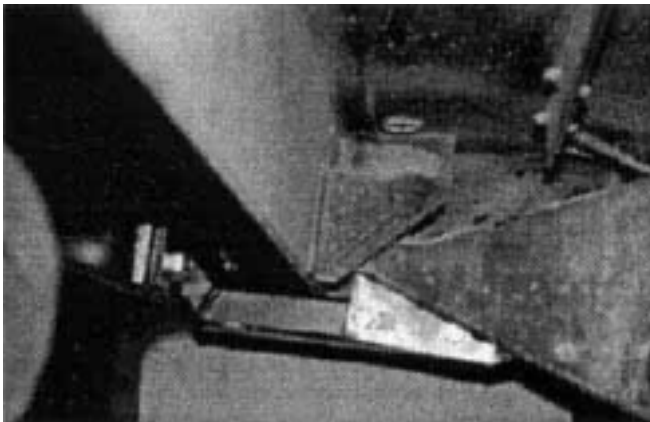


Fig. 8a Front arm loosely attached to hanger

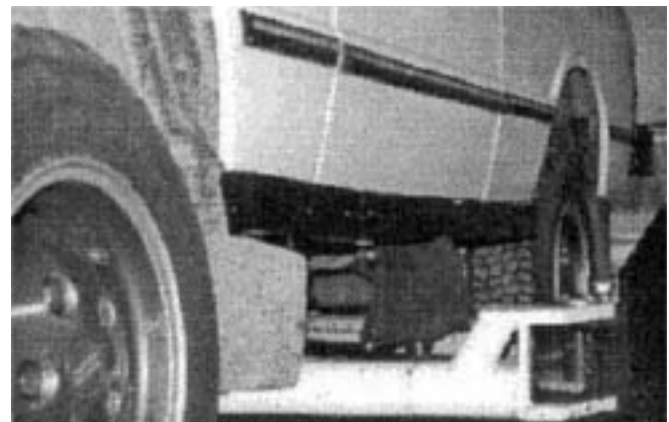


Fig. 9 Finished installation

17. Adjust sill inward and side to side.
18. Lift sill to align hole to riv nuts.
19. Loosely install 8mm bolts and washers.
20. Check alignment.
21. Tighten all bolt and nuts.
22. Close door and check for chaffing.

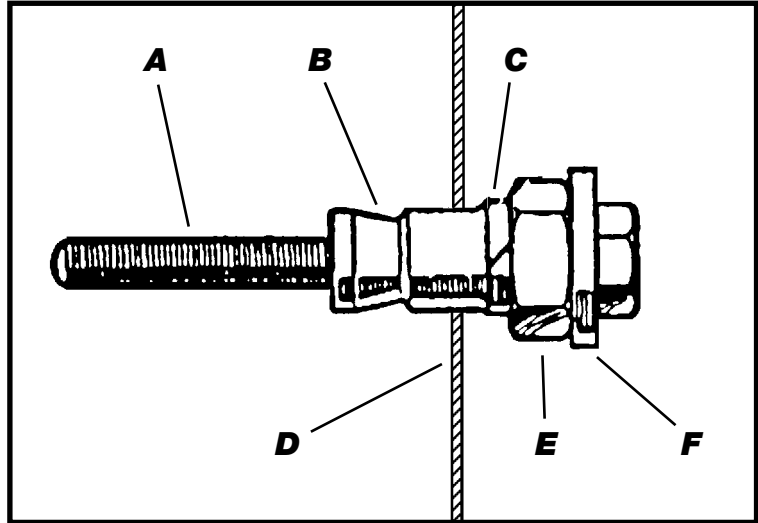


T H E S P E C I A L I S T S I N L A N D R O V E R S • U S A

Rivnut Installation Instructions

Hardware

- A** **Set Bolt**
B **Rivnut**
C **Lock Washer**
D **Body Panel**
E **Nut**
F **Flat Washer**



Fitting Rivnut Instructions

1. Fit flat washer (F) nut (E) and lock washer (C) to set bolt (A)
2. Fit Rivnut (B) to set bolt (A) flat end first, finger tight
3. Insert Rivnut into drilled hole of body panel (D) and while holding Rivnut (B) flange against the panel (D) put spanner on (E) and hold stationary and turn set bolt (A) clockwise with another spanner until it is tight - this will set the Rivnut.
4. Turn set bolt (A) counter clockwise and remove - repeat for all other Rivnuts.

1 802 879-0032

or (800) 403-7591 • Fax: (802) 879-9152
 email@roversnorth.com • www.roversnorth.com

Rovers North, Inc. • 1319 VT Rt. 128 • Westford, Vermont • 05494-9601 USA



T H E S P E C I A L I S T S I N L A N D R O V E R S • U S A

Instructions Questionnaire

We rely on our customers to help us continually improve our instruction sheets. Please FAX or mail any comments, questions, or ideas for improvements you may have.

Send To: Rovers North
1319 Vermont Route 128
Westford, VT 05494

or Fax: 802-879-9152

Your Name: _____
Address: _____

Phone #: _____
Email Adrs: _____

Instruction part number (top right corner) or description of what instructions are: _____
Overall, how would you rate the quality of this set of instructions? (please circle one):

Poor		Fair		Good		Very Good		Excellent	
1	2	3	4	5	6	7	8	9	10

Ideas, Comments, or Corrections (please include specifics, such as page number, or step number):

THANK YOU!

1 802 879-0032 or (800) 403-7591 • Fax: (802) 879-9152
email@roversnorth.com • www.roversnorth.com
Rovers North, Inc. • 1319 VT Rt. 128 • Westford, Vermont • 05494-9601 USA