



THE SOURCE FOR CLASSIC
LAND ROVER PARTS

www.roversnorth.com

Part Nr. RNA2100

Fits:

Defender 1983-2002

Fitting Instructions for Rear Moulded Interior Door Panel Assembly for Defender

READ ALL INSTRUCTIONS COMPLETELY BEFORE BEGINNING!

Introduction

Black Defender interior rear door panel with pocket net. Door panel is manufactured in the UK to fit Defender vehicles with anti-burst door latch. Includes mounting hardware and instructions.

Will not fit NAS Defender tailgates with soft tops.



Fitting Instructions for Rear Moulded Interior Door Panel Assembly for Defender

Suggested Tools

- Sharp knife/ Deburring Tool
- Drill
- 3, 4.5, 5, 6, 10mm Drill Bits
- Pozidrive / Phillips head screwdriver
- 4mm Allen Key

There will be some trimming of the plastic moulding required in order to fit this product due to the adjustment movement in door locks/strikers and hinges. We recommend a utility type craft knife or deburring tool for plastic trimming. A half round file would be useful too. When fitting to a Series door there will be some additional trimming required. A Dremel tool and a file are also useful for installation. Read through the instructions first before attempting the trim fitting. If you are in any doubt about any element of these instructions contact us.



Marker,
Pencil or
Pen



Ruler in
Millimeters,
Inches



Pozidrive/
Phillips
Screwdriver



Metal Drill Bits
3, 4.5, 5, 6, 10mm

Drill

Drill Bit Conversion	
Millimeters	Drill Size or #
2.9464mm.....	#32
4.4958mm.....	#16
4.9784mm.....	#9
5.9531mm.....	15/64"
9.9219mm.....	25/64"



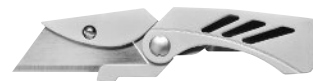
4mm Allen
Key



Bradawl



1/2 Round File



Utility Pocket Knife



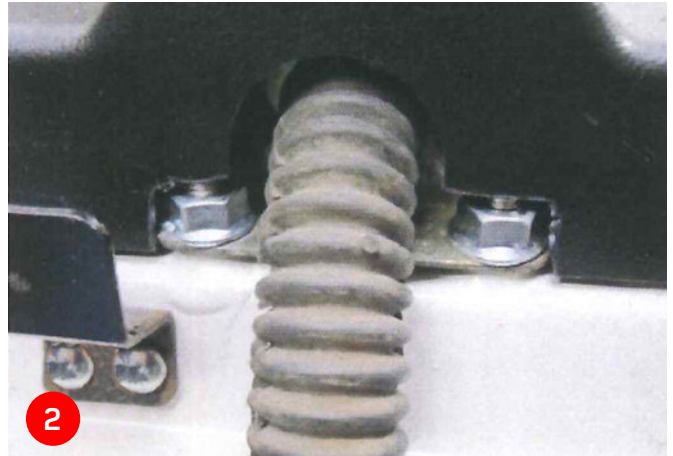
Dremel Tool

This kit will contain the following

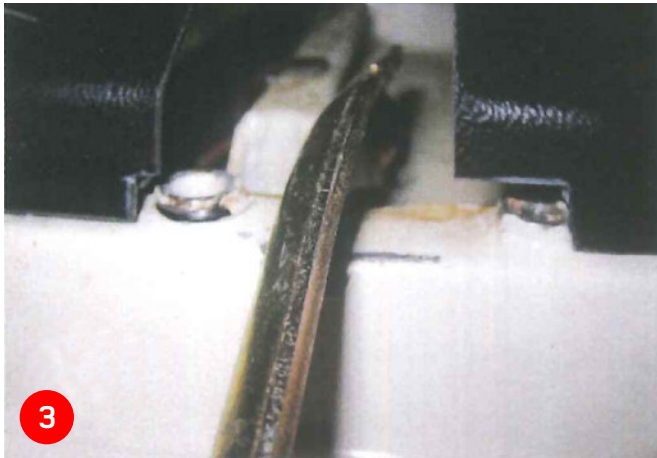
- 1 x MUD-UK Rear Door Trim Panel
- 1 x Storage Net and 5 x Fixing Hole Plugs
- 2 x Long Angled Fixing Brackets
- 2 x Short Angled Fixing Brackets
- 1 x MUD-UK Logo Badge
- 2 x Grab Handle Fixing Bolts & 2 x Washers
- 15 x Self Tapping Screws
- 12 x Plastic Rivets

Fitting Instructions for Rear Moulded Interior Door Panel Assembly for Defender

Step 1. Remove original door trim piece. Place MUD-UK door trim onto door and align edges.



Step 2. Check the moulding for clearance around the rear door hinge fasteners. Because the positioning of the hinge is adjustable you may need to trim the plastic trim to clear the nuts.



Step 3. Check clearance around the door check strap. When fitting to a Series vehicle you may need to trim a larger section of the plastic away in order to clear the Series style rear door check strap.



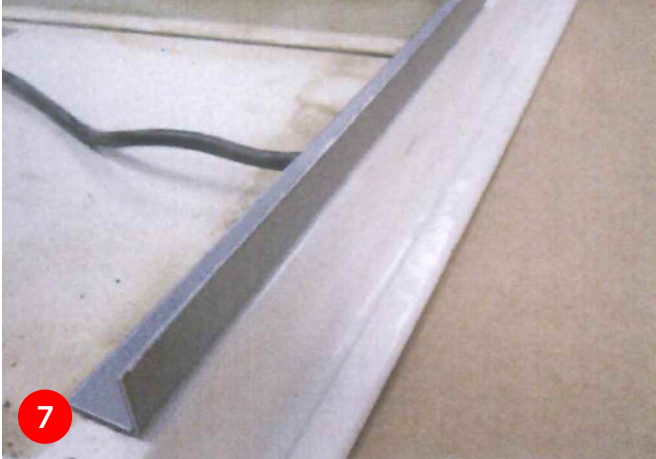
Step 4. Check the door handle and the lock mechanism button operate freely. Trim or file the plastic moulding where necessary.



Step 5. Check the clearance around the lock and striker and trim where necessary.



Step 6. Once you are satisfied that the trim sits square on the door, mark around the edges of the trim with a pencil.

Fitting Instructions for Rear Moulded Interior Door Panel Assembly for Defender

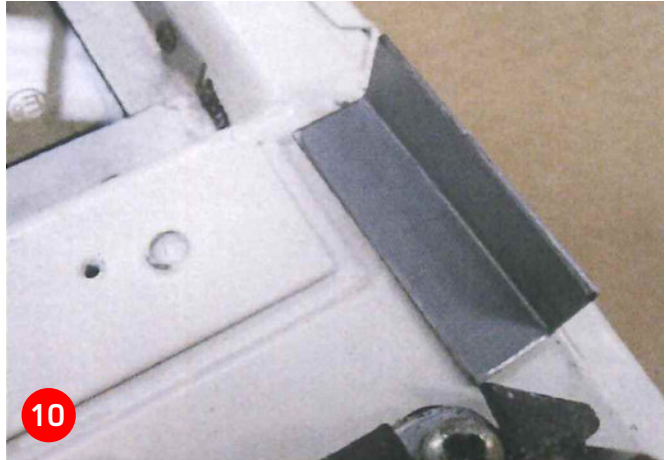
Step 7. The longer pair of angled fixing plates fix to the lower portion of the door. Position the fixing plates to the inside or your pencil outline allowing for the thickness of the trim panel.



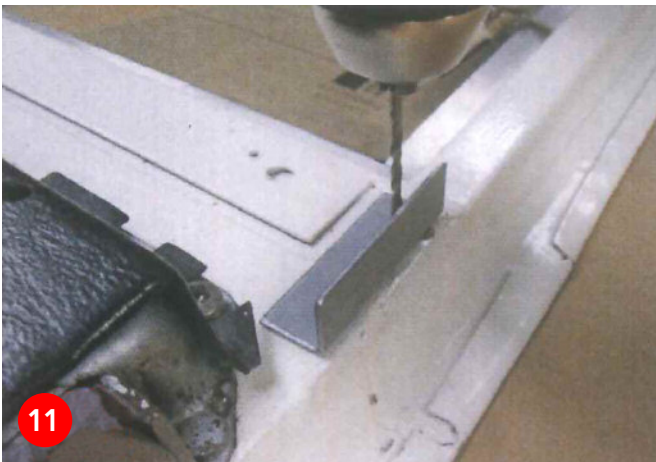
Step 8. Position and drill the fixing holes in a rust-free area of the door frame! Use a 3mm drill for the fixing screws. Enlarge the holes in the brackets with a 4.5/5mm drill to allow the fixing screw to pass through the bracket.



Step 9. Fix the angled mounting brackets into the door frame using the stainless steel screws provided.



Step 10. Repeat the process for the upper fixing points using the smaller of the angled mounting plates.



Step 11. Note how the upper fixing plates fix to the door tapering inwards to follow the rear door outline.



Step 12. Place the door onto the mountings and double check clearances around the door handle, stiker etc.

Fitting Instructions for Rear Moulded Interior Door Panel Assembly for Defender

Step 13. Mark the position of the door handle onto the plastic trim and drill a 10mm hole for the grab handle fixing bolt. Ensure the bolt hole aligns with the rivnut in the door frame.



Step 14. Once you are satisfied the door trim fits snugly around the mounting frame, you can now begin to secure the panel. Using a 6mm drill bit, drill through the plastic trim into the angled brackets.



Step 15. Push the plastic fastener through the hole.



Step 16. The fir tree fasteners are a push fit.



Step 17. Use the handle end of a hammer or a large screwdriver and simply push the head of the plastic rivet fixing to secure.



Step 18. Fix the lower portion of the trim panel to the door frame using the same fitting technique with the rivets. Remember to attach to a solid rust free section of the door frame.

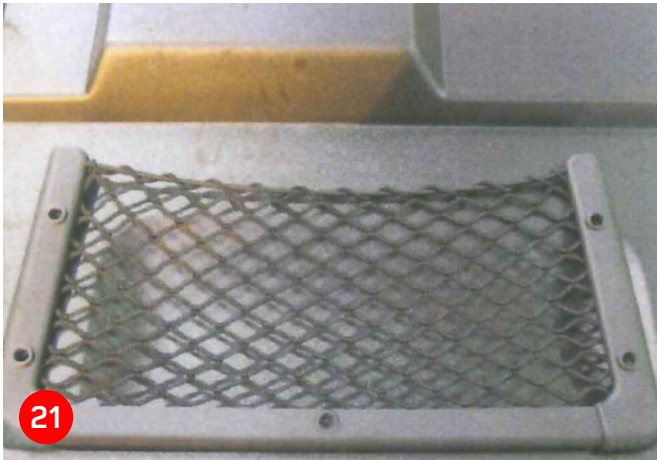
Fitting Instructions for Rear Moulded Interior Door Panel Assembly for Defender



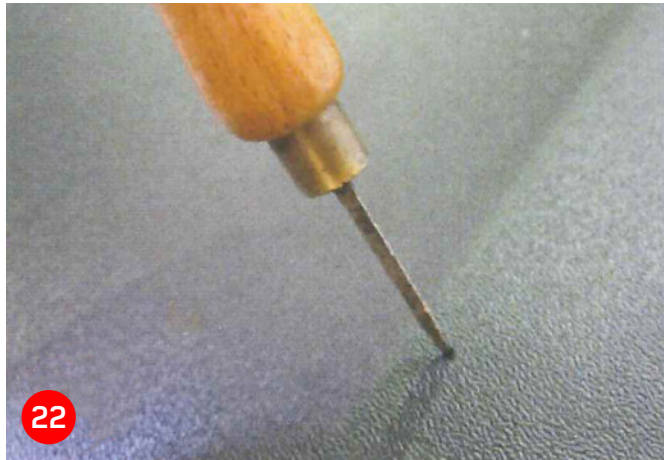
Step 19. Refit the grab handle using the new socket headed bolt provided. Use a 4mm hex Allen Key.



Step 20. Fix the self adhesive MUD logo to the recessed portion of the door trim.



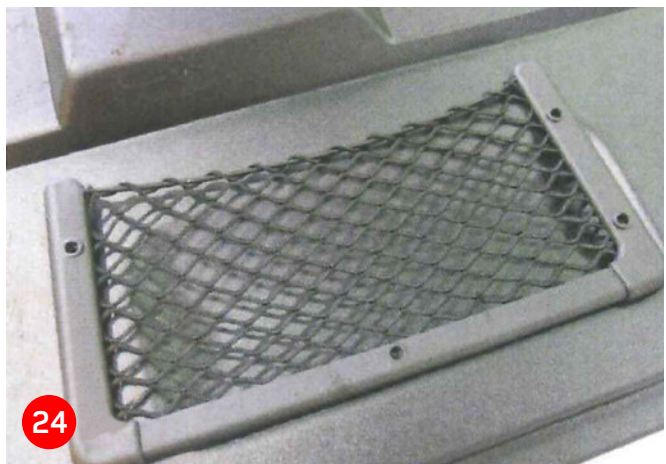
Step 21. You can fit the net when the door trim is in place or before you install the trim onto the door. Use fixing point at the bottom of the net as a guide to find the centre line.



Step 22. Mark the central fixing location with a bradawl or similar sharp pointed tool.

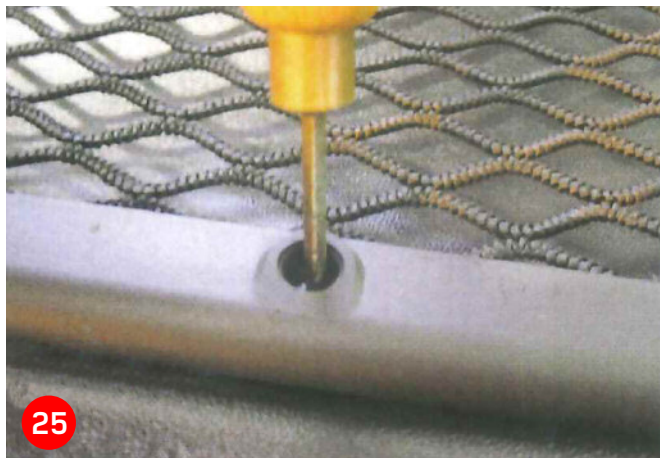


Step 23. Drill through the trim using a 3mm drill bit.

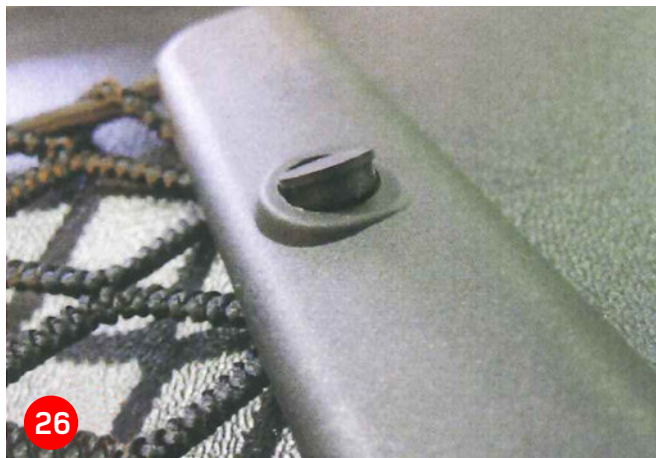


Step 24. Reposition the net over the fixing hole and screw the net into the door panel with the supplied screws. Align the other screw holes, mark and drill.

Fitting Instructions for Rear Moulded Interior Door Panel Assembly for Defender



Step 25. When you've marked the screw holes take care not to snag the netting in your drill when drilling the fixing holes.



Step 26. Plug the fixing holes with the plugs provided.



Step 27. Push the plugs flush into the net frame with the end of a screwdriver.



Step 28. Job well done, congratulations!