



THE SOURCE FOR CLASSIC  
LAND ROVER PARTS

www.roversnorth.com

# Fitting Instructions for Discovery II Rock Slider Set

Part Nr. TF809

Fits:

Discovery II

**READ ALL INSTRUCTIONS COMPLETELY BEFORE BEGINNING!**

## Note

The Terrafirma powder coat finish is not suitable for areas exposed to road salt.

## Suggested Tools

- 10mm Socket or Open Box End Wrench
- Spanner to Fit Bolts
- Trim Clip Tool or Long Nose Pliers
- Marker, Pencil or Pen
- 8.5, 13mm Drill Bits
- Hammer
- Center Punch



**Step 1.** Put the car into gear or park and apply the hand brake.



Hammer



10mm Wrench,  
Spanner  
and/or Sockets  
to fit Bolts



Marker,  
Pencil or  
Pen



Trim Clip  
Tool or  
Pliers



Small Center  
Punch



Metal Drill  
Bits  
8.5, 13mm



Drill

**Fitting Instructions for Discovery II Rock Slider Set**



**Step 2.** Remove the original plastic sill trims, use a clip tool or a pair of long nose pliers.



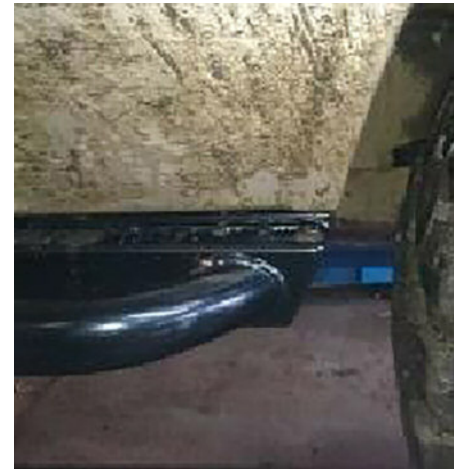
**Step 3.** Remove the 10mm nut from the center of the lower section at the rear of the front wing; the plastic trim should now be free to be removed. Trim off the excess thread from front wing mounting bolt.



**Step 4.** Lift the Rock Slider up into place with a bottle jack or similar, adjust the position to get correct fitment and to avoid fouling on the front tyre.



**Fitting Instructions for Discovery II Rock Slider Set**



**Step 4 continued.** Above top three photos.



**Step 5.** When you are happy with the positioning of the Rockslider mark and drill the holes, the round holes need to be drilled to 13mm (5 holes inner, nearest side to chassis, 4 holes on the outside) to allow the crush tubes to be inserted. The oval slotted holes need to be drilled to 8.5mm (4 holes inner, nearest side to chassis, 5 holes on the outside).



**Step 6.** When fitting the bolts make sure the crush tubes are used to avoid squashing your standard sills, From the outside the tube should be slid over the bolt and then both inserted into the hole you have just drilled.

**Fitting Instructions for Discovery II Rock Slider Set**



**Step 7.** When fitting the crush tubes from the inner, nearest the chassis side the bolt need to come through the hole from the outside and then the tube slid into the hole and over the bolt.



**Step 8.** Tighten all bolts and repeat the procedure on the other side.

**NOTE:** The rear most hole in the Rock Slider is not used.

Depending on the condition of the sills on your car the crush tubes may need cutting down.